



Buy America Products

Valid for Purchases Through 12-31-2018

macleanpower.com



MacLean Power Systems

Some of Our U.S. Plants



MacLean Power Systems — Trenton, Tennessee



MacLean Power Systems — York, South Carolina



MacLean Power Systems — Newberry, South Carolina



CNC milling for precision and consistency



Robotic welding for consistent quality

MacLean Power Buy America Products

The MacLean Power Systems products listed in this catalog meet the current FHWA Buy America requirement. All manufacturing processes for these steel and iron materials, including the application of coatings has occurred in the United States. State and local requirements may vary. The MPS products in this catalog, with part numbers ending in “-US”, meet the FHWA Buy America requirements.

To inquire about other MPS products that may meet Buy America or other certifications, contact customer service at 1-855-MPS-SHIP.



Machine Bolt



- Square head and square nut
- Forged steel and roll threaded
- Hot dip galvanized

Bolt Length	Thread Length	5/8"	3/4"
8	4	J8808-US	J8908-US
10	6	J8810-US	J8910-US
12	6	J8812-US	J8912-US
14	6	J8814-US	J8914-US
16	6	J8816-US	J8916-US
18	6	J8818-US	J8918-US
20	6	J8820-US	J8920-US

All Dimensions in Inches

"A" Cable Suspension



- Square head and two square nuts
- Forged steel and roll threaded
- Hot dip galvanized

Bolt Length	Thread Length	5/8"	3/4"
8	4	JCA6645.A01-US	—
10	6	JCA6645.A02-US	JCA6645.A10-US
12	6	JCA6645.A03-US	JCA6645.A11-US
14	6	JCA6645.A04-US	JCA6645.A12-US
16	6	JCA6645.A05-US	JCA6645.A13-US
18	6	JCA6645.A06-US	JCA6645.A14-US
20	6	JCA6645.A07-US	—

All Dimensions in Inches

Thimble Eye Bolt



- Forged steel and roll threaded, includes square nut
- Hot dip galvanized

Bolt Length	Thread Length	5/8"	3/4"
10	4	J8051-US	—
12	6	J8052-US	J8062-US
14	6	J8053-US	J8063-US
16	6	J8054-US	—
18	6	J8055-US	—

All Dimensions in Inches

For the above bolts: Minimum tensile strength: 5/8"=13,550 lbs, 3/4"=20,050 lbs.
Items hot dipped galvanized per ASTM A153.



5/8" Oval Eye Bolt



- Forged steel and roll threaded, includes square nut
- Hot dip galvanized

Bolt Length	Thread Length	5/8"
6	4	J9406-US
8	4	J9408-US
10	6	J9410-US
12	6	J9412-US
14	6	J9414-US
16	6	J9416-US
18	6	J9418-US
20	6	J9420-US

All Dimensions in Inches

Double Arming Bolt

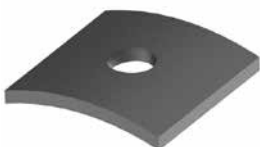
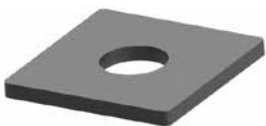


- Carbon steel and roll threaded
- Comes assembled with four square nuts
- Hot dip galvanized

Bolt Length	5/8"	3/4"
12	J8862-US	J8882-US
14	J8864-US	J8884-US
16	J8866-US	J8886-US
18	J8868-US	J8888-US
20	J8870-US	J8890-US
22	J8872-US	J8892-US
24	J8874-US	J8894-US
26	J8876-US	J8896-US
28	J8877-US	—
30	J8878-US	—
36	J8881-US	—

All Dimensions in Inches

Washers



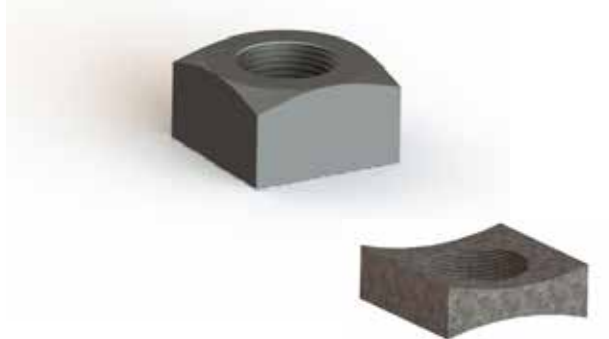
Bolt Diameter	Description	Hole Diameter	Dimensions	Catalog #
5/8	Square Washer	11/16	2 x 2 x 1/8	J1074-US
5/8	Square Washer	11/16	2-1/4 x 2-1/4 x 3/16	J1075-US
3/4	Square Washer	13/16	2-1/4 x 2-1/4 x 3/16	J1076-US
5/8	Round Washer	11/16	1-3/4	J1088-US
3/4	Round Washer	13/16	2	J1089-US
5/8	Curved Square Washer	11/16	2-1/2 x 2-1/2 x 3/16	J6822-US
3/4	Curved Square Washer	13/16	3 x 3 x 1/4	J6823-US

- Carbon steel and galvanized

All Dimensions in Inches



Nuts



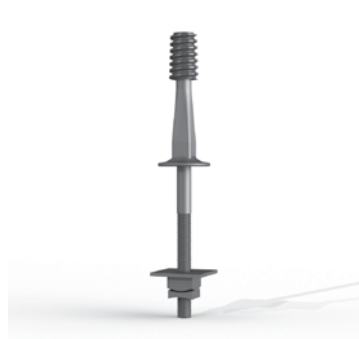
Bolt Diameter	Description	Catalog #
5/8"	MF locknut	J8583-US

5/8"	Square Nut	J8563-US
3/4"	Square Nut	J8564-US

All Dimensions in Inches

- Carbon steel and galvanized

Crossarm Pin



Nylon Alloy Top	shank Diameter	shank length	Ht above arm	Catalog #
1" ANSI	5/8	6-1/2	5	J204Z-US
			6	J207Z-US

All Dimensions in Inches

- Forged steel and roll threaded, hot dipped galvanized
- A square wrenching shoulder is provided for alignment of the insulator
- Pins come with a square washer, square nut and MF locknut

CRS

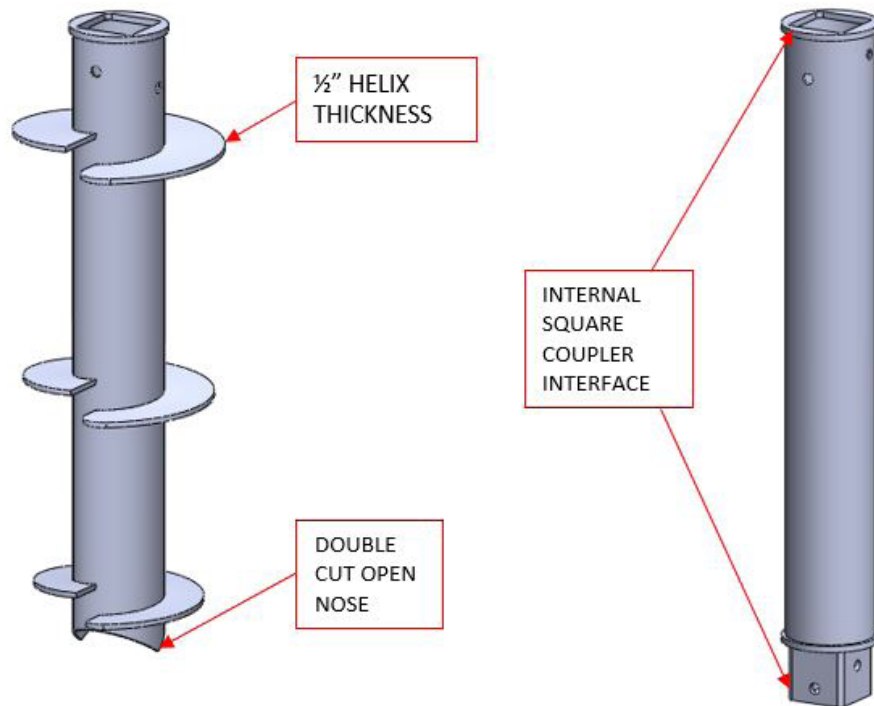


Nominal Conductor	Conductor Dia. Range	Color Code	Catalog #
#4	.229-.265	Orange	7651-CRS-US
#2 & #4	.229-.340	RED / ORANGE	7652AP-CRS-US
1/0	.365-.425	YELLOW	7653-CRS-US
1/0 & 2/0	.365-.475	GRAY / YELLOW	7654AP-CRS-US
3/0 & 4/0	.502-.585	PINK/BLACK	7656AP-CRS-US
266.8 & 336.4	.580-.724	GREEN/BROWN	7658AP-CRS-US
397.5 & 477	.740-.856	AQUA	7659-CRS-US
556.6 to 795	.879-1.040	NATURAL	7660-CRS-US

- CRS - Corrosion Resistant Splice automatic splices
- Used on ACSR, AAC, AAAC conductor
- Pop up tab to verify proper insertion
- Rated to hold min. of 95% of RBS of strand used
- ANSI C119.4 Full Tension Class A connector
- Advanced synthetic inhibitor for superior corrosion protection
- Color coded strand guide for easy identification

All Dimensions in Inches

Substation Foundations



8.625" Pipe Pile Leads, 0.188" Wall Thickness

40,000 ft-lb Ultimate Installing Torque
150,000 lb Ultimate Tension Load
200,000 lb Ultimate Compression Load

Catalog Number	Helix Diameter (in)	Shaft Length (ft)	Weight (lbs)
F86L60T16-US	16	5	125
F86L60T20-US	20	5	135
F86L60T1416-US	14, 16	5	140

- Hot Dip Galvanized

8.625" Pipe Pile Extensions, 0.188" Wall Thickness

40,000 ft-lb Ultimate Installing Torque
150,000 lb Ultimate Tension Load
200,000 lb Ultimate Compression Load

Catalog Number	Shaft Length (ft)	Weight (lbs)
F86LE60-US	5	122
F86LE84-US	7	160
F86LE120-US	10	207

- Hot Dip Galvanized

8.625" Pipe Pile Leads, 0.250" Wall Thickness

40,000 ft-lb Ultimate Installing Torque
175,000 lb Ultimate Tension Load
300,000 lb Ultimate Compression Load

Catalog Number	Helix Diameter (in)	Shaft Length (ft)	Weight (lbs)
F86M60T16-US	16	5	152
F86M60T20-US	20	5	162
F86M60T1416-US	14, 16	5	167

- Hot Dip Galvanized

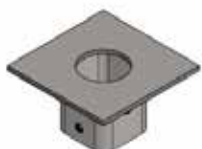
8.625" Pipe Pile Extensions, 0.250" Wall Thickness

40,000 ft-lb Ultimate Installing Torque
150,000 lb Ultimate Tension Load
200,000 lb Ultimate Compression Load

Catalog Number	Shaft Length (ft)	Weight (lbs)
F86ME60-US	5	149
F86ME84-US	7	200
F86ME120-US	10	260

- Hot Dip Galvanized

F86 New Construction Brackets



Catalog Number	Dimensions LxWxH (in)	Weight (lbs)
NCB121204R86-US	12x12x0.5	52

- Hot Dip Galvanized



Round Corner Square Helical Anchors



1-1/4 Inch Round Shaft Leads; 7 foot length
2,300 ft-lb Ultimate Installing Torque
23,000 lb Ultimate Tension Load

Catalog Number	Helix Diameter (in)	Weight (lbs)
D6710-US	10	42
D6720-US	8, 10	48
D6730-US	8, 10, 12	57

1-1/4 Inch Round Shaft Extensions
2,300 ft-lb Ultimate Installing Torque
23,000 lb Ultimate Tension Load

Catalog Number	Shaft Length (ft)	Weight (lbs)
D6733-US	3.5	18
D6735-US	5	25
D6737-US	7	33

- Hot Dip Galvanized

- Hot Dip Galvanized

1-1/2 Inch Round Corner Square Shaft Leads
5,500 ft-lb Ultimate Installing Torque
55,000 lb Ultimate Tension Load

Catalog Number	Helix Diameter (in)	Shaft Length (ft)	Weight (lbs)
D6632-US	8, 10	3	35
D6634-US	10, 12	3.5	50
D6636-US	8, 10, 12	5.5	66
D6637-US	10, 12, 14	7	91
D6638-US	10, 12, 14, 14	10.5	136

- Hot Dip Galvanized

1-1/2 Inch Round Corner Square Shaft Extensions
5,500 ft-lb Ultimate Installing Torque
55,000 lb Ultimate Tension Load

Catalog Number	Helix Diameter (in)	Shaft Length (ft)	Weight (lbs)
D6620UC-US	12	5	56
D6620UD-US	14	5	57
D6616U-US	—	3.5	28
D6620U-US	—	5	40
D6625U-US	—	7	55
D6630U-US	—	10	79

- Hot Dip Galvanized



1-1/2 Inch Round Corner Square Shaft Leads
7,000 ft-lb Ultimate Installing Torque
70,000 lb Ultimate Tension Load

Catalog Number	Helix Diameter (in)	Shaft Length (ft)	Weight (lbs)
D66327-US	8, 10	5	53
D66347-US	10, 12	5	60
D66367-US	8, 10, 12	7	87
D66377-US	10, 12, 14	7	91

- Hot Dip Galvanized

1-1/2 Inch Round Corner Square Shaft Extensions
7,000 ft-lb Ultimate Installing Torque
70,000 lb Ultimate Tension Load

Catalog Number	Helix Diameter (in)	Shaft Length (ft)	Weight (lbs)
D6616UC7-US	12	3.5	41
D6616UD7-US	14	3.5	45
D6616U7-US	—	3.5	31
D6620U7-US	—	5	41
D6625U7-US	—	7	57
D6630U7-US	—	10	79

- Hot Dip Galvanized

1-3/4 Inch Round Corner Square Shaft Leads
10,000 ft-lb Ultimate Installing Torque
100,000 lb Ultimate Tension Load

Catalog Number	Helix Diameter (in)	Shaft Length (ft)	Weight (lbs)
D17532-US	8, 10	5	66
D17536-US	8, 10, 10	7	100
D17538-US	10, 12, 14, 14	10	159

- Hot Dip Galvanized

1-3/4 Inch Round Corner Square Shaft Extensions
10,000 ft-lb Ultimate Installing Torque
100,000 lb Ultimate Tension Load

Catalog Number	Helix Diameter (in)	Shaft Length (ft)	Weight (lbs)
D2801-0011-US	14	5	63
D17516-US	—	3.5	38
D17520-US	—	5	54
D17525-US	—	7	75
D17530-US	—	10	108

- Hot Dip Galvanized



No-Wrench Anchors

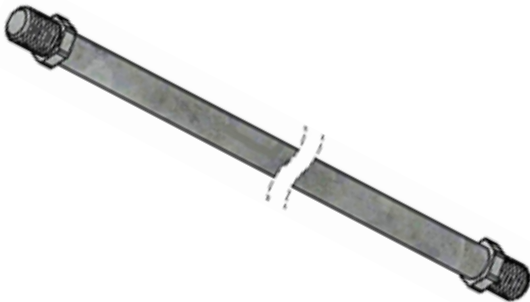


Catalog Number	Helix Diameter (in)	Rod Diameter (in)	Rod Length (ft)	Weight (lbs)
J6524WCA-US	4	3/4	4.5	8
J6526WCA-US	6			12
J6528WCA-US	8			18
J6530WCA-US	10	1-1/4	5.5	29
J6550WCA-US	10			39
J6584WCA-US	14		8	57
J6585WCA-US	15			58

- All No-Wrench Anchors have 3 Guy Attachments

- Hot Dip Galvanized

Power Hub and Manta Ray™ Anchor Rods



5/8 Inch Diameter
16,000 lbs Ultimate Tensile Strength

Catalog Number	Length (ft)	Weight (lbs)
D6231/2-US	3.5	3
D62-US	7	6

- Hot Dip Galvanized

3/4 Inch Diameter
23,000 lbs Ultimate Tensile Strength

Catalog Number	Length (ft)	Weight (lbs)
D7531/2-US	3.5	5
D75-US	7	10

- Hot Dip Galvanized

1 Inch Diameter
36,000 lbs Ultimate Tensile Strength

Catalog Number	Length (ft)	Weight (lbs)
D10031/2-US	3.5	7
D100-US	7	16

- Hot Dip Galvanized

Power Hub Anchor Rod Eyenuts



5/8 Inch Rod Diameter Eyenuts
16,000 lbs Ultimate Tensile Strength

Catalog Number	Eyenuit Design	Weight (lbs)
TEN-5-US	Triple	2.2

- Hot Dip Galvanized

3/4 & 1 Inch Rod Diameter Eyenuts
36,000 lbs Ultimate Tensile Strength

Catalog Number	Eyenuit Design	Weight (lbs)
TEN-8-US	Triple	2.1

- Hot Dip Galvanized

Plate, Expanding (Bust) and No-Wrench Extensions



Catalog Number	Number of Guy Attachments	Rod Diameter (in)	Rod Length (ft)	Weight (lbs)
D1099-0012-US	3	3/4	2	6
D1099-0006-US		1	1.5	7
D402-36-US		1-1/4	3	18

NOTE: Additional lengths available

Round Corner Square Guy Terminations



1-1/4 In Round & 1-1/2 In Square Shaft Guy Terminations

Catalog Number	Eyenuit Design	Length (in)	Weight (lb)
T6606-US	Triple Eye	11	8

- Hot Dip Galvanized



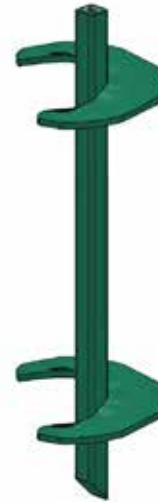
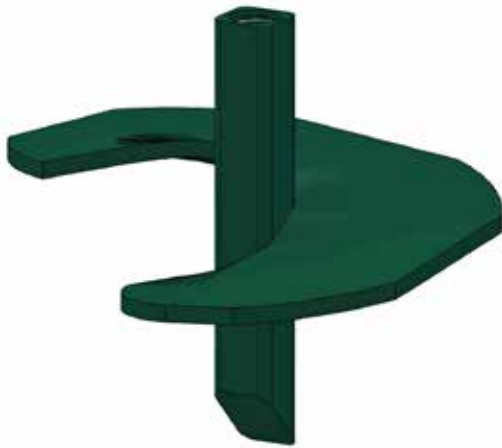
1-3/4 In Square Shaft Guy Terminations

Catalog Number	Eyenuit Design	Length (in)	Weight (lb)
D2801-0002-US	Triple Eye	24	25

- Hot Dip Galvanized



Power Hub Anchors



1-3/8 Inch Square Power Hub Anchors
6,000 ft-lb Ultimate Installing Torque

Catalog Number	Helix Diameter (in)	Tapped for Rod Size (in)	Weight (lbs)
D826-US	8	5/8	9
D846-US	8	3/4 or 1	9
D1026-US	10	5/8	12
D1046-US	10	3/4 or 1	12
D1126-US	12	5/8	16
D1146-US	12	3/4 or 1	16
D1346-US	14		20
D84-2-6-US	8, 8		25
D104-2-6-US	10, 10		30

- Coated in a rust inhibitor

1-1/2 Inch Square Power Hub Anchors
6,000 ft-lb Ultimate Installing Torque

Catalog Number	Helix Diameter (in)	Tapped for Rod Size (in)	Weight (lbs)
D182-US	8	5/8	10
D184-US	8	3/4 or 1	10
D1104-US	10	3/4 or 1	13
D1114-US	12		16
D1134-US	14		21
D284-US	8, 8		27
D2104-US	10, 10		32

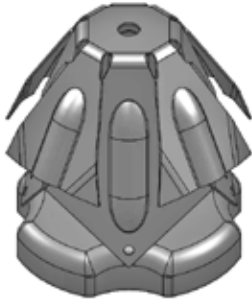
- Coated in a rust inhibitor

1-1/2 Inch Square Power Hub Anchors
7,000 ft-lb Ultimate Installing Torque

Catalog Number	Helix Diameter (in)	Tapped for Rod Size (in)	Weight (lbs)
D184-7-US	8	3/4 or 1	10
D1104-7-US	10		15
D1114-7-US	12		17
D244-7-US	4, 4		20
D284-7-US	8, 8		27
D2104-7-US	10, 10		33

- Coated in a rust inhibitor

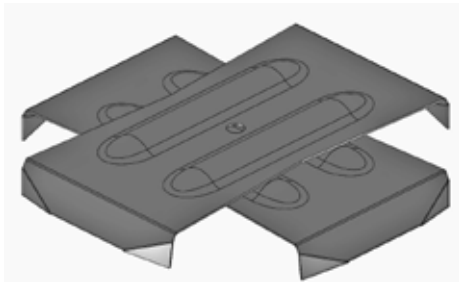
Expanding (Bust) Anchors



Catalog Number	Installation Hole Diameter (in)	Area of Anchor (sq in)	Rod Diameter (in)	Weight (lbs)
J0870-US	6	70	5/8	5
J8115-US	8	115	5/8 or 3/4	7
J8135-US		135		8
J8135-1-US			1	8
J8200-3/4-US	10	200	5/8 or 3/4	18
J8200-1-US			1	19
J0283-1-US			1	29
J0283-US	12	300	1-1/4	29

- Coated in a rust inhibitor

Cross-Plate Anchors



Catalog Number	Installation Hole Diameter (in)	Area of Anchor (sq in)	Rod Diameter (in)	Weight (lbs)
J3516-US	16	150	5/8 or 3/4	10
J3520-US	20	250		16
J3520-1-US			1	16
J3524-3/4-US			24	400
J3524-US	1	31		
J3524-1-US	1-1/4	31		

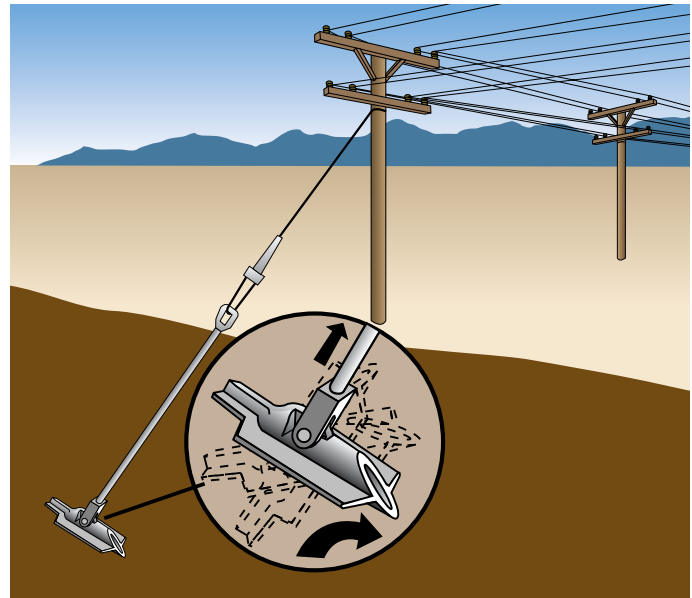
- Coated in a rust inhibitor

Pole Key

Catalog Number	Width Expanded (in)	Blade Width (in)	Area of Anchor (sq in)	Weight (lbs)
J4817-US	27.25	7	276	23

- Coated in a rust inhibitor

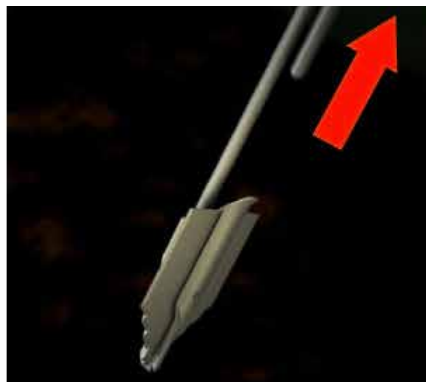
Manta Ray™ Driven Anchors



How it works



Drive Anchor



Remove Drive Steel



Pull Rod

Manta Ray™ Driven Anchors

Catalog Number	Anchor Model	Tapped for Rod Size (in)	Ultimate Load Rating (lbs force; rod dependant)	Weight (lbs)
20210-UT-II-US	MR-3	5/8	16,000	7
20199-UT-II-US	MR-2	3/4 or 1	23,000 or 36,000	10
20036-UT-II-US	MR-1			13
20229-UT-II-US	MR-SR			20

- Hot Dip Galvanized

Streetlight Foundations



6 Inch Diameter Pipe with a 12" Square Top Plate

Catalog Number	Length (ft)	Bolt Circle Range (in)	Weight (lbs)
D0660BBB8148V-US	5	8-14	143
D0672BBB8148V-US	6		169
D0684BBB8148V-US	7		178

8 Inch Diameter Pipe with a 16" Square Top Plate

Catalog Number	Length (ft)	Bolt Circle Range (in)	Weight (lbs)
D0860BBB1178V-US	5	11-17	181
D0872BBB1178V-US	6		215
D0884BBB1178V-US	7		238

10 Inch Diameter Pipe with a 16" Square Top Plate

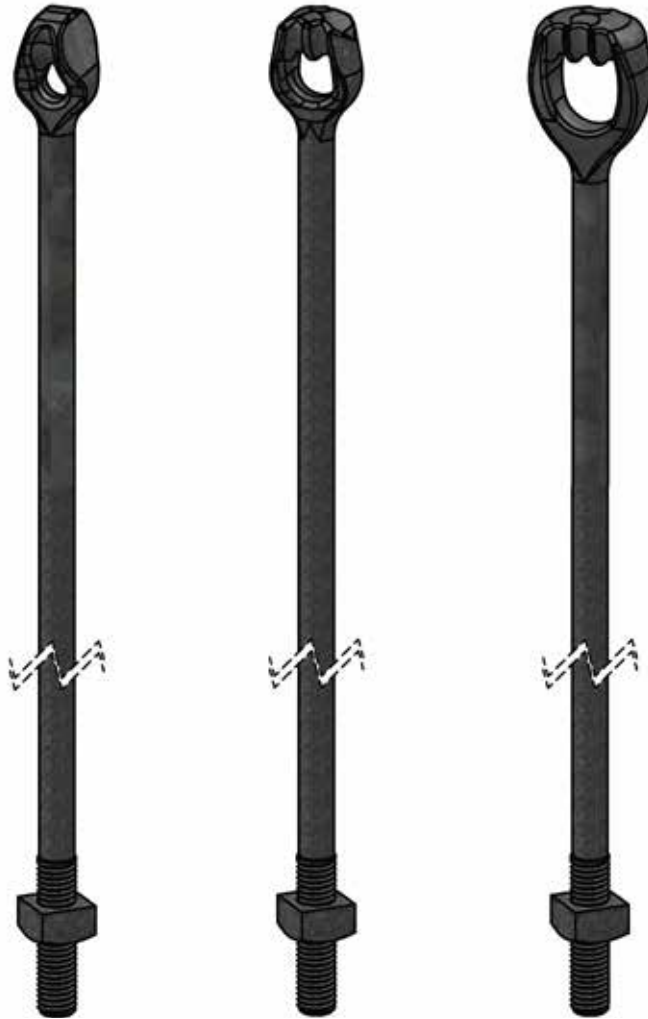
Catalog Number	Length (ft)	Bolt Circle Range (in)	Weight (lbs)
D1060BBB1178V-US	5	11-17	217
D1072BBB1178V-US	6		245
D1084BBB1178V-US	7		273
D1096BBB1178V-US	8		301

Standard cableway slot size is 12" x 2-5/8" and located 12" below the top plate

Standard top plate configuration is shown in Figure 1

Standard hardware consists of four (4) of the following : 1" x 4" carriage bolts, flat washer, and hex nut

Rods for Cross-Plate Anchors and Expanding Anchors



Thimble Eye Rods

Catalog Number	Ultimate Tensile Strength (lbs)	Rod Diameter (in)	Rod Length (ft)	Weight (lb)
J7415-US	16,000	5/8	5	6
J7416-US			6	7
J7417-US			7	8
J7418-US			8	9
J7428-US	23,000	3/4	8	12

- Hot Dip Galvanized



Twin Eye Rods

Catalog Number	Ultimate Tensile Strength (lbs)	Rod Diameter (in)	Rod Length (ft)	Weight (lb)
J7516-US	16,000	5/8	6	7
J7517-US			7	8
J7518-US			8	9
J7527-US	23,000	3/4	7	10
J7528-US			8	12
J7529-US			9	14
J7530-US			10	16
J7538-US	36,000	1	8	18
J7540-US			10	28

- Hot Dip Galvanized

Triple Eye Rods

Catalog Number	Ultimate Tensile Strength (lbs)	Rod Diameter (in)	Rod Length (ft)	Weight (lb)
J7327-US	23,000	3/4	7	12
J7328-US			8	13
J7329-US			9	14
J7338-US	36,000	1	8	19
J7340-US			10	23
J7350-US	58,000	1-1/4	10	43

- Hot Dip Galvanized



Other Quality MacLean Products

Anchoring Systems
Conductor Hardware
Connectors
Cutouts
Enclosures and Pads
Fiberglass Products
Formed Wire
Grounding and Tools
Insulator Systems
Pole Line Hardware
Surge Arresters
Telecommunications Hardware



MacLean Power Systems
481 Munn Road, Suite 300
Fort Mill, SC 29715 USA
fax 803.396.8601
maclepower.com

Customer Service 1.855.MPS.SHIP
info@maclepower.com